

LEFT HAND DRIVE 26,000 kg 2009 58 Scania P380 Semi-Automatic. Coach built by LEHEL coach builders. Stalled for 5/6 with luxury living, Two slide outs, twin pop ups, sleeping for up to 7 people. Huge specification. Rear steer, Type two approved!



sales@horseboxseller.com
01327 368 474



- 2009 Model 26,000 kg Scania 380 6X2 Chassis
- Horsebox from new
- Stalled for 5 large horses or 6 ponies
- Sleeping for up to 7
- Two electric slide outs
- Huge amount of external locker and underfloor storage

Price: £114,995
ref:23-710

Overview

- 2009 Model 58 Scania P 380 26,000 kg Chassis
- Horsebox from new
- Stalled for 5 large horses or 6 ponies
- Smart luxurious living, Two slides out
- Rear steer

Cabin / Chassis / Engine

- 2009 Model Scania P series 6X2 Chassis
- Year of first registration: 2009
- Transmission: Semi-automatic
- Mileage: 180,326 kms = 113,049 Miles
- Model: P series 380
- Fuel: Diesel
- Griffin Cream heated leather seating which also have lumbar support and adjustment
- Climate control
- Radio/CD upgraded speakers
- Air conditioning
- Multi-function steering wheel, which also adjust
- Cruise control
- Twin electric windows
- Rear air suspension
- Switch for fans
- Mot April 2025
- CCTV camera system
- Exhaust brake
- Internal LED lighting in cab
- 12 volt charger
- Heated adjustable wing mirrors
- ABS braking system
- On-board Scania control system
- Central locking
- Full tilt cab
- Rear steer
- Diff lock

Living Area

- Underfloor heating
- Insulated walls and ceiling
- Gloss lined walls
- Cut through cab
- Electric slide out
- C shape cream/red leather seating (Storage underneath) with seat belts
- Large Luton with mattress with large sky light in ceiling (TV to side)
- Padded ceiling with night reading light
- Detachable dining table
- Fitted granite work top with inbuilt sink and fitted hob
- Large fridge/freezer

- Second fridge
- Combi microwave
- Water heater
- Multiple glass cabinets cupboards
- Large, fitted Mirror
- Multiple plug sockets
- Fitted window blinds
- Lehel control panel
- Upgraded water pump
- Twin pop up for sleeping up to 3 people (Each pop up has own TV with heating)
- Two large hanging wardrobes in the hallway
- LED internal lighting
- Multiple down spot lighting
- Upgraded heavy duty leisure battery with split charger system and inverter

Bathroom

- Fitted granite work top with in built sink and large mirror on the wall
- Fitted corner shower unit with detachable shower head
- LED lighting including mood lighting
- Upgraded high pressure water pump
- Fitted electric flush toilet
- Underfloor heating
- Electric side out in the bathroom

Horse Area

- Electric winch at the front of the horse area
- Stalled for 5/6 herringbone
- Full height and width in the horse area
- Four herringbone adjustable style aluminum polished padded partition with rubber skirting
- Aluminum polished lining on the wall with heavy duty EVA kick boarding below
- Aluminum planked floor with cushioned rubber flooring with drainage holes
- Full length rug rack
- Two large manual skylights
- Three defra approved fans
- Multiple tie and hay net rings
- LED lighting including night light and loading light
- Large, tinted windows with window bars for protection (Windows also open out)
- Rear loading doors
- Power rear ramp with one piece rubber matting
- Light and airy in the horse compartment, well ventilated

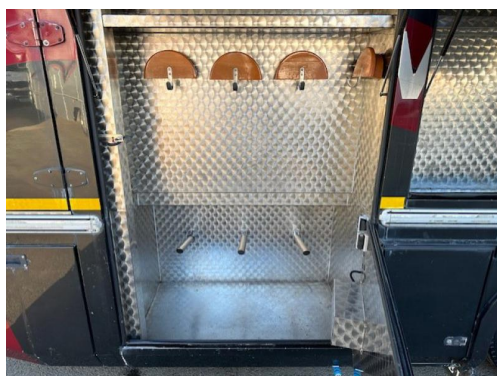
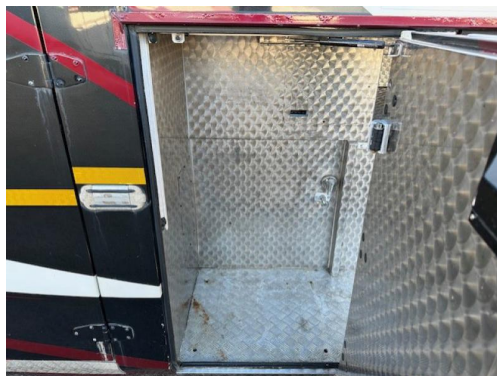
Exterior

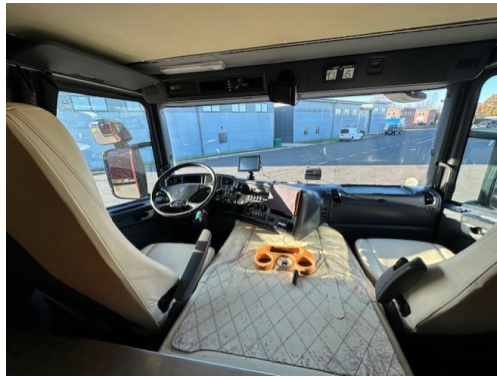
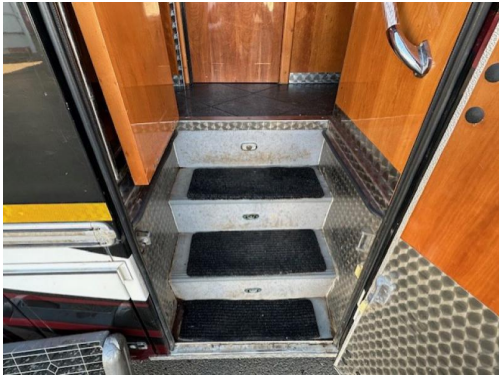
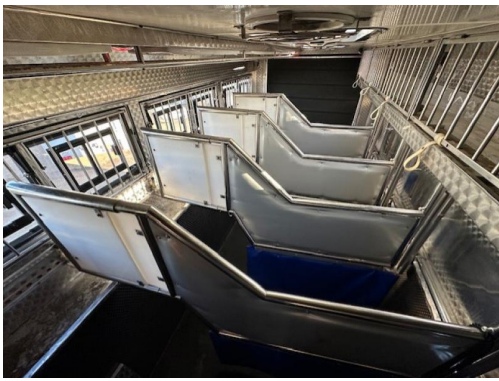
- Metallic paintwork (Striking paintwork)
- Chrome wheel trims
- Large underfloor storage with access point
- Three large external tack lockers
- Twin large water tank
- Multiple skirt lockers
- Outside freezer locker

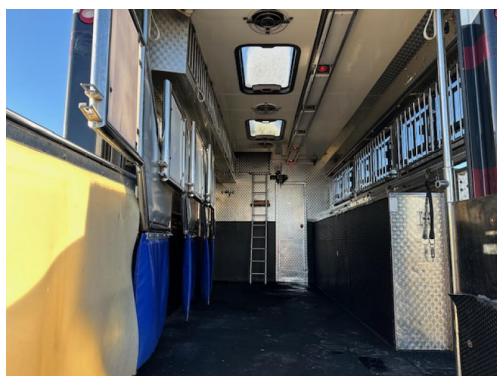
- External led lighting
- Bonded tinted fitted windows
- 240-volt connection point including separate connection point for the air conditioning
- Inbuilt steps into the hallway
- Kelsa Chrome front light bar

Summary

- Excellent condition throughout
- Maintained regardless of cost
- Price £114995









Tel : 01327 368 474 or 01327 262 950
E-mail : sales@horseboxseller.com
Mobile : 07725 470 956



www.horseboxseller.com