

**2008 DAF LF 8.3 Ton recent build by Hayling Island Horseboxes. Stalled for 3. Smart luxury living, Sleeping for 3. Fitted toilet. Metallic paint.. Striking horsebox!**

  
**HORSEBOXSELLER**  
your perfect horsebox

sales@horseboxseller.com  
01327 368 474



- 2008 DAF LF 8,300 KG Chassis
- Recent build by Hayling Island horseboxes
- Stalled for 3 herringbone
- Euro 5
- Smart luxury living, sleeping for 4
- Metallic paint

**Price: £29,995**  
ref:23-666

## Overview

- DAF LF 8.3 Ton 4X2 Chassis
- Coach built by Hayling Island Coach builders
- Recent build
- Stalled for 3
- Smart living, with fitted toilet

## Cabin / Chassis / Engine

- 2008 DAF LF 8.3 ton 4X2 chassis
- Date of first registration: 15/05/2008
- Mileage: 227,257 Miles
- Mot: December 2024
- Three leather seats in the cab
- ABS braking system
- Fuel: Diesel
- BHP: 160 BHP
- Transmission: Manual
- Engine size: 4461 cc
- Rear steel suspension
- Power steering
- Adjustable driver seat
- Reading light
- CCTV camera system
- Cruise control
- Radio
- Euro 5
- On-board computer system
- Exhaust brake
- Full tilt cab

## Living Area

- Blown heating
- Multiple plug sockets
- Cut through cab
- Insulated ceiling
- Lined walls
- L shape leather seating with storage underneath, bed converts into a double (Grey leather with cream piping)
- Sleeping for two above the cab in the luton with mattress
- Hob
- Sink
- Fitted work top
- Fridge
- Oven
- Multiple Cupboard and large wardrobe
- Lino flooring
- Lighting
- Tinted windows
- Detachable table

## **Bathroom**

- Fitted flush toilet
- Lighting

## **Horse Area**

- Light and airy in the horse compartment, very well ventilated
- Stalled for 3 herringbone
- Excellent height, width and length in the horse are
- Two adjustable partitions
- Aluminum planked flooring with cushioned thick anti-slip rubber matting
- Heavy duty EVA kick boarding
- Large windows with window bar for protection
- Multiple tie rings and haynet rings
- GRP rear loading doors
- Well balanced manual rear ramp with anti-slip rubber matting on top
- Lighting throughout including loading light

## **Exterior**

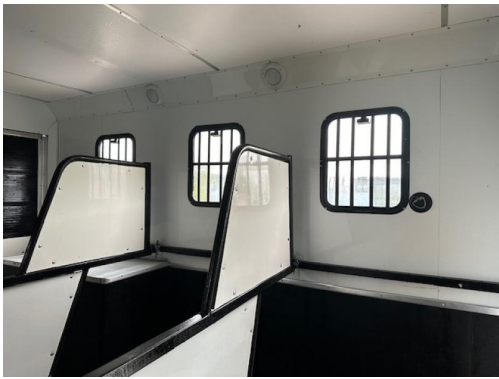
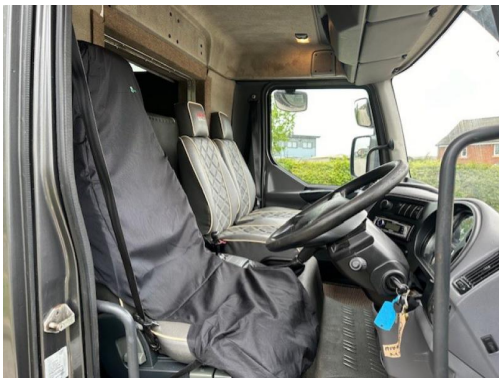
- Finished off in Metallic Bentley Grey
- External tack locker
- External tie rings
- External light outside living door
- Water tank
- Multiple skirt lockers
- Chrome wheel trims
- Fold down steps into living area

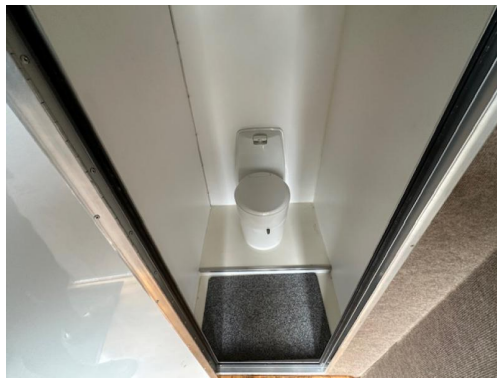
## **Specification**

- Unladen weight circa 6.000 kg = Payload circa 2,300 kg

## **Summary**

- Price £29995
- Stunning horsebox.





**Tel : 01327 368 474 or 01327 262 950**  
**E-mail : [sales@horseboxseller.com](mailto:sales@horseboxseller.com)**  
**Mobile : 07725 470 956**



[www.horseboxseller.com](http://www.horseboxseller.com)