

***** NEW PRICE *** 2007 Iveco Eurocargo Automatic 12 Ton Coach built by Whittaker coach builders. Stalled for 3 with smart luxury living, sleeping for 4. Toilet and shower. Rear air suspension.. Only 46,540 miles from new!**


HORSEBOXSELLER
your perfect horsebox

sales@horseboxseller.com
01327 368 474



- 12 Ton 2007 Iveco Eurocargo Automatic 4X2 Chassis
- Coach built by Whittaker Horseboxes
- Stalled for 3
- Smart luxury living, sleeping for 4
- Rear air suspension
- Only 46,540 miles from new

Deposit Taken
ref:23-637

Overview

- 12 Ton Iveco Eurocargo Automatic 4X2 Chassis
- Only 46,540 Miles from new
- Stalled for 3
- Smart luxurious living with sleeping for 4
- Automatic chassis

Cabin / Chassis / Engine

- 2007 Iveco Eurocargo Automatic 12 Ton Chassis
- Date of first registration: 24/08/2007
- Gross vehicle weight:12,000 kg
- Rear air suspension
- Automatic gearbox
- Engine: 3920 cc
- Mileage: 46,540 Miles
- Mot: Years MOT upon sale
- Fuel: Diesel
- BHP: 170
- Velour interior
- Power steering
- Radio/CD Bluetooth
- Camera system
- ABS braking system
- Exhaust brake
- Electric heated mirrors
- Euro 4
- Cruise control
- Onboard computer system

Living Area

- Large, fitted mirror
- Insulated ceiling walls
- Lined walls
- Cut through cab
- C shape Blue leather seating
- Large luton with fitted mattress and sky light in the ceiling
- Seating converts into a double
- Fitted work top with sink
- Full cooker with hob
- Fridge
- TV point
- Heating
- Hot water
- Glass fronted cabinets
- Mood and LED lighting throughout
- Whittaker on board computer system
- Large, tinted windows with fitted blinds
- Large hanging wardrobes

- Heavy duty leisure batteries with split charging system

Bathroom

- Fitted flush toilet
- Fold down sink with inbuilt vanity unit
- Fitted shower tray
- Window
- Lighting

Horse Area

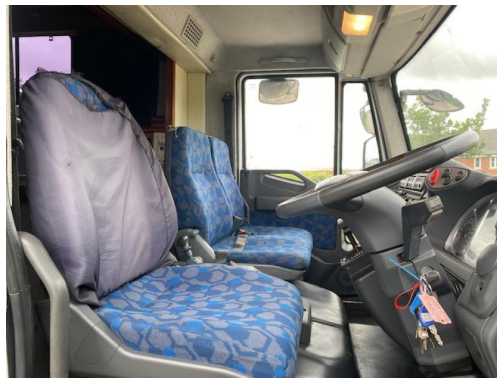
- Stalled for 3 herringbone
- Full height and width in the horse compartment
- Two herringbone style padded adjustable with rubber skirting
- Aluminum planked flooring with sealed cushioned rubber matting
- Rug rack
- LED lighting including night travel lighting
- Aluminum polished boarding the EVA kick boarding below around the walls
- Padded ceiling with two large roof vent
- Multiple adjustable tie and hay net rings
- Large, tinted windows with bars
- Aluminum rear loading gates
- Well balanced rear ramp with rubber matting with rubber tread
- Light and airy in the horse compartment, well ventilated and very inviting for the horses

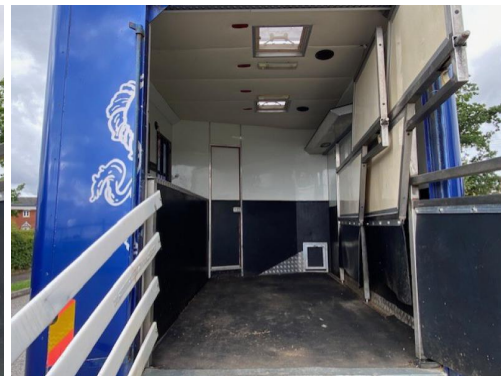
Exterior

- Finished off in Metallic silver with metallic blue graphics and skirting
- Two external tack lockers
- Large water tank
- Outside horse wash
- 240 volt connection point
- Tinted fitted windows
- Multiple skirt lockers
- Chrome wheel trims
- Fold down fitted steps into the living area
- Anti-spray mat

Summary

- Excellent condition throughout, Very smart HGV Horsebox
- Price £30000







Tel : 01327 368 474 or 01327 262 950

E-mail : sales@horseboxseller.com

Mobile : 07725 470 956



www.horseboxseller.com