

**2016 Mercedes Benz Sprinter 5.0 Ton Coach
built by WHS coach builders. Weekender model.
Stalled for 2 rear facing. Full side ramp. Smart
living at the rear.. Pristine condition throughout**


HORSEBOXSELLER
your perfect horsebox

sales@horseboxseller.com
01327 368 474



- 2016 Mercedes Benz 5.0 Ton Sprinter
- Coach built by WHS Horseboxes
- Stalled for 2 rear facing
- Smart living area at the rear
- Stunning horsebox
- Recent build

Deposit Taken
ref:24-885

Overview

- 2016 Mercedes Benz 5.0 Ton LWB chassis
- Weekender Model
- Pristine condition throughout
- LIKE NEW!

Cabin / Chassis / Engine

- 2016 Mercedes Benz Sprinter 5.0 ton LWB chassis
- Date of first reg: 30/06/2016
- Fuel: Diesel
- Steering: Right hand drive
- Mot: December 2024
- 160 BHP
- Engine size: 2143 cc
- Euro: 6
- Mileage 75,024 Miles
- 6 speed manual
- Turbo diesel
- Seating for 3 people in the cab (Black leather seating with red piping)
- Radio with CD player
- Twin electric windows
- Multi-functional steering wheel
- ABS braking system
- Remote central locking
- CCTV camera system
- Remote central locking
- Day time LED running lights
- Onboard computer system

Changing Area

- Hob/sink
- Seating to both sides which converts into small bed
- Mini Fridge
- Hanging wardrobe
- Multiple plug sockets
- Portable toilet
- Sleeping above the cab
- Oversize rear door,

Horse Area

- Stalled for 2 rear facing
- Additional padded pack including bum and side pads
- Fully strengthened and reinforce seamless passengers bulkhead
- 8 foot internal height
- Adjustable padded partition including unique design maximizing head and neck protection
- Full height detachable breast bar

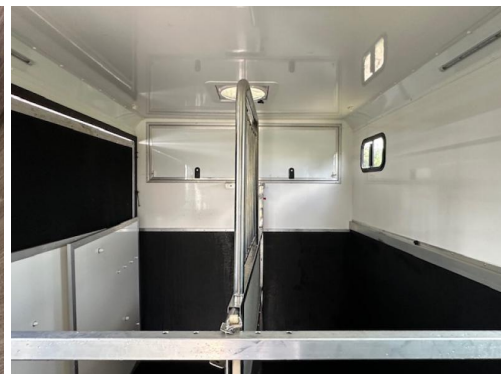
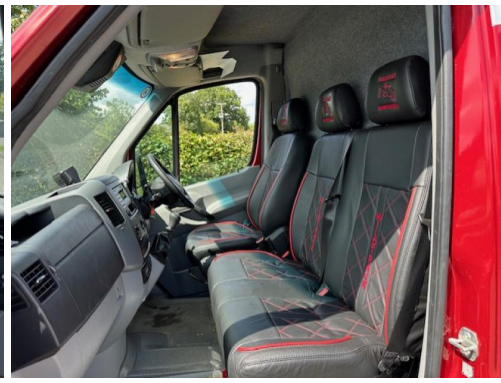
- Sealed rubber flooring with drainage holes approved for internal jet washing
- Reinforced super light composite roof with ventilation system
- Rear door/ emergency exit through changing area at the rear
- Full side ramp with GRP loading doors
- Stainless steel tie rings and hay net rings
- Multiple large opening tinted windows with stainless steel internal window bars,

Exterior

- External tie rings
- Metallic multi paintwork (Pristine condition)
- External tack locker
- LED lighting
- Chrome wheel trims
- Large rear door

Summary

- Pristine condition throughout....
- Price £45000





Tel : 01327 368 474 or 01327 262 950
E-mail : sales@horseboxseller.com
Mobile : 07725 470 956



www.horseboxseller.com