

**2020 Peugeot Boxer 3.5 Ton Equi-trek Atom.
Stalled for 2 rear facing. Changing area.. Only
11,062 Miles from new! Pristine condition
throughout.. Huge payload**



HORSEBOXSELLER
your perfect horsebox

sales@horseboxseller.com
01327 368 474



- 2020 Peugeot Boxer 3500 KG Chassis
- Coach built by Equi-trek horseboxes
- Stalled for 2 rear facing,
- Changing area at rear
- Atom model
- Huge payload

Price: £34,995
ref:24-883

Overview

- Peugeot Boxer 3.5 Ton chassis
- Horsebox from new
- Atom model
- Only 11,065 miles from new!

Cabin / Chassis / Engine

- 2020 Peugeot Boxer 3,500 KG chassis
- Mileage: 11,065 miles
- Mot: April 2025
- Engine size: 2200 cc
- Date of first registration: 07/07/2020
- Fuel: Diesel
- BHP: 162 BHP
- Gross vehicle weight: 3,500 kg
- Three seats in the cab with seat covers
- Electric windows
- Multi-function steering wheel
- Heated wing mirrors
- ABS braking system
- CD/Radio
- Power steering
- Twin electric windows
- Remote central locking
- CCTV Camera system

Changing Area

- Window
- Viro flooring
- Saddle and bridle racks
- Lighting

Horse Area

- Stalled for 2 rear facing
- Excellent, height, width and length in the horse compartment
- Adjustable partition with detachable anti-bite guard
- Detachable breast bar
- Aluminium flooring with anti-slip rubber matting
- EVA kick boarding
- Manual roof vent
- Large luton for storage
- Lighting
- Multiple tie rings and hay net rings
- GRP side loading gates
- Split side ramp with lift up door
- Lighting throughout

- Large windows with window bars
- Light and airy in the horse compartment, well ventilated

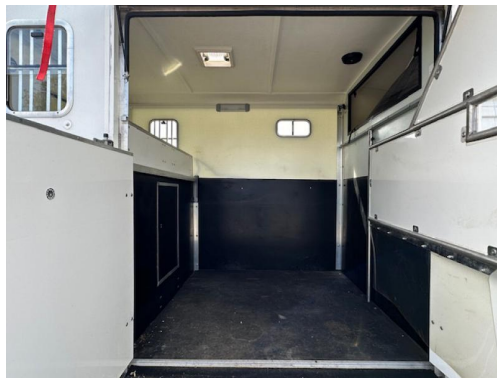
Exterior

- Finished off in self white
- Alloy wheels
- Rear door into changing area
- External tie rings

Summary

- Pristine condition throughout..
- Huge payload, Equi-Trek claim 1400 kg
- Price £34995





Tel : 01327 368 474 or 01327 262 950
E-mail : sales@horseboxseller.com
Mobile : 07725 470 956



www.horseboxseller.com