

**2008 LDV Maxus 3.5 Ton Professional conversion by Hayling truck Island horseboxes. Stalled for 2 forward facing. Full side ramp. Smart changing area at the front with cut through cab.**



[sales@horseboxseller.com](mailto:sales@horseboxseller.com)  
01327 368 474



- 2008 LDV Maxus LWB 3.5 Ton chassis
- Professional conversion (2020 conversion)
- Stalled for 2 forward facing
- Smart changing area at front with cut through cab
- Mot November 2024
- Excellent condition throughout

**Deposit Taken**  
ref:24-872

## Overview

- LDV Maxus LWB 3500 KG chassis
- Stalled for 2 forward facing
- Changing area at front with cut through cab

## Cabin / Chassis / Engine

- 2008 LDV Maxus LWB Chassis
- Gross vehicle weight: 3500 kg
- Date of first registration: 03.04.2008
- Engine size: 2500 cc
- Euro 4
- BHP: 120 BHP
- Three seats in the cab
- ABS braking system
- Radio/ CD
- Power steering
- Mileage: 94,401 Miles
- Mot: November 2024
- Fuel: Diesel
- Electric windows
- CCTV Camera system

## Changing Area

- Lighting
- Windows
- Seating to one sides
- Two bridle and saddle racks
- Large luton sleeping for 2

## Horse Area

- Stalled for 2 forward facing
- Adjustable aluminum padded partition
- Excellent height, width and length in the horse area
- Detachable breast bar
- Anti-slip rubber matting
- Heavy duty EVA kick boarding
- Insulated roof
- Full side ramp
- GRP side loading doors
- Large windows with bars
- Multiple tie rings
- Light and airy in the horse compartment

## Exterior

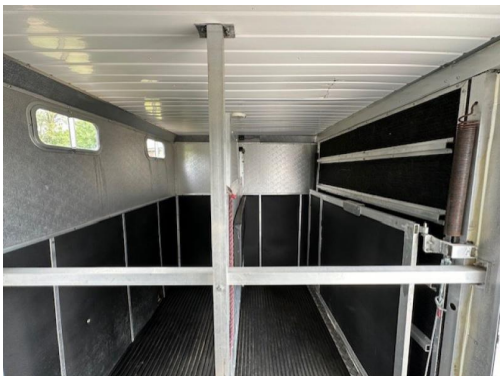
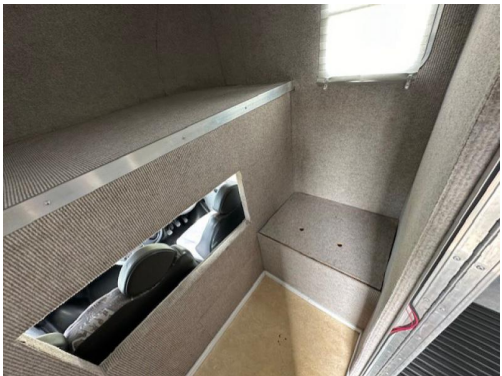
- Finished of in BMW white with blue graphics

- External tie rings
- Fold down steps in horse area
- LED rear lights

## **Summary**

- Excellent condition throughout
- Price £12995









**Tel : 01327 368 474 or 01327 262 950**  
**E-mail : [sales@horseboxseller.com](mailto:sales@horseboxseller.com)**  
**Mobile : 07725 470 956**



[www.horseboxseller.com](http://www.horseboxseller.com)