

**2004 Mercedes Benz Atego 7.5 Ton Coach built by Highbarn Coach builders. Elite Model Stalled for 3. Smart spacious living, sleeping for 4. Toilet and shower. External tack locker. Smart looking horsebox!**

  
**HORSEBOXSELLER**  
your perfect horsebox

sales@horseboxseller.com  
01327 368 474



- 2004 Mercedes Benz Atego 7.5 Ton Chassis
- Smart living, sleeping for 4
- Stalled for 3
- Coach built by Highbarn horseboxes
- Toilet and shower
- Mot June 2025

**Price: £19,995**  
ref:24-866

## Overview

- 7.5 ton Mercedes Benz Atego Chassis
- Stalled for 3
- Smart living
- Sleeping for 4
- Coach built by Highbarn horseboxes

## Cabin / Chassis / Engine

- Mercedes Benz Atego 4X2 chassis
- 7.5 ton chassis
- Two axle
- Date of first reg: 18/03/2004
- Engine size: 4250 cc
- Euro 4
- 150 BHP
- Right hand drive
- Diesel engine
- Mileage: 263,384 Miles
- Manual Transmission
- Mot : June 2025
- Cream and brown leather seating
- Three seats in the cab
- Reading lights
- ABS braking system
- CD/Radio system
- Adjustable wing mirrors
- Paper tachograph
- Electric windows
- 12 volt plug socket
- Adjustable drivers seat
- Power steering
- On board computer system

## Living Area

- Detachable dinning table
- Insulated Ceiling
- Cut through cab
- Lined walls
- L shape leather seating matching drivers and passenger seat
- Sleeping for two above the cab
- Seating converts into a bed
- Mattress in luton
- Sink
- Full cooker
- Hot and cold water
- Fitted work surface
- Fridge
- Multiple cupboards for storage

- Large hanging wardrobe
- TV
- Multiple opening windows
- Lighting
- Blinds for the windows
- Multiple plug socket
- Leisure batteries,

## **Bathroom**

- Fitted flush toilet
- Fitted shower tray
- Fold down sink
- Detachable shower head
- Lighting

## **Horse Area**

- Stalled for three
- Herringbone
- Excellent height and width in the horse area
- 2 herringbone adjustable padded partitions with rubber skirting
- Strong flooring throughout the horse area with thick anti-slip rubber matting
- Full lighting in the horse area including rear loading light
- EVA kick boarding in the horse area
- Tie rings
- Rear GRP loading doors
- Manual rear ramp
- Rug rack
- Large windows for excellent ventilation with guards on the window

## **Exterior**

- Fold out steps into the living area,
- Finished off in two tone paintwork
- Two external tack locker
- 240 volt hook up connection
- Water tank
- Gas bottle locker
- Multiple skirt lockers
- Chrome wheel trims
- External tie rings

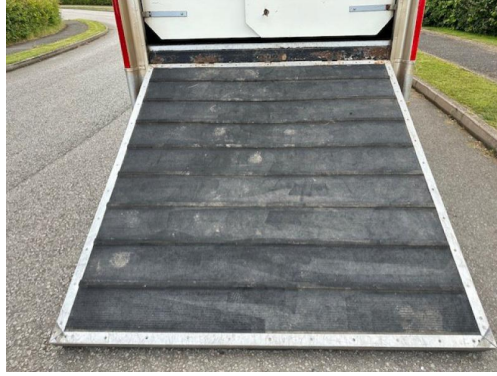
## **Summary**

- Excellent condition throughout for age, regularly maintained and serviced
- Price £19995









**Tel : 01327 368 474 or 01327 262 950**  
**E-mail : [sales@horseboxseller.com](mailto:sales@horseboxseller.com)**  
**Mobile : 07725 470 956**



[www.horseboxseller.com](http://www.horseboxseller.com)