

2005 Mercedes Benz 7.5 Ton Coach built by George Smith Coach builders. Stalled for 4 facing forward. with twin side ramps. Smart changing area. Well built horsebox



sales@horseboxseller.com
01327 368 474



- 7.5 Ton Mercedes Benz Atego chassis
- Coach built by George Smith coach builders
- Stalled for 4, forward facing
- Smart changing area
- Rear air suspension
- Horsebox from new!

Price: £10,950
ref:24-861

Overview

- 7,500 Kg Mercedes Benz Atego Chassis
- Rear air suspension
- Stalled for 4 facing forward
- Coach built by George Smith Horseboxes

Cabin / Chassis / Engine

- Mercedes Benz Atego 4X2 chassis
- 7.5 ton chassis
- Model: Atego
- Two axle
- Fuel: Diesel
- Steering: Right hand drive
- Date of first reg: 15/03/2005
- Rear Air suspension
- Manual gear box
- Mot : March 2025
- Mileage reading : 348,397 kms = 216,483 Miles
- Three seats in the cab
- Electric windows
- Radio
- Reading lights
- Paper tachograph
- Power steering
- 12 volt plug socket
- Adjustable drivers seat
- CCTV camera system,

Living Area

- Insulated Ceiling
- Cut through cab
- Lined walls
- Bench seating with storage underneath
- Hob
- Sleeping for two above the cab
- Blown heating
- Padded ceiling
- TV point
- Multiple opening windows with blinds

Horse Area

- Stalled for four
- Stalled for 4 facing forward
- Excellent height, length and width in the horse area
- Four full H stye padded partitions with detachable anti-bite guards
- Aluminum flooring throughout the horse area with thick anti-slip rubber matting

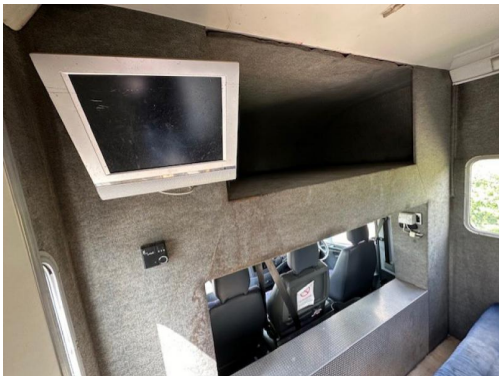
- Full height breast bar with access door below
- Full lighting in the horse area including side loading light
- Padded ceiling with two manual roof vents and Defra approved fans
- Heavy duty EVA kick boarding in the horse area
- Tie rings
- Large windows for excellent ventilation
- Side GRP loading doors
- Two well balanced side ramps
- Light and airy in the horse compartment well ventilated,

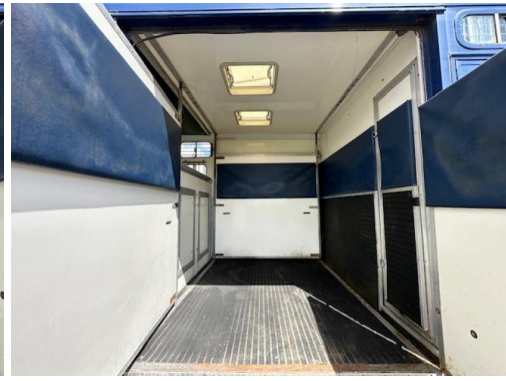
Exterior

- Blue paintwork with red graphics
- Water tank
- Gas bottle locker
- Multiple skirt lockers
- Chrome wheel trims
- Side jockey door into horse area
- Rear aluminum fold out steps access door into rear of the horse area,

Summary

- Excellent condition throughout for age, well maintained horsebox
- Great value £10950





Tel : 01327 368 474 or 01327 262 950
E-mail : sales@horseboxseller.com
Mobile : 07725 470 956

HORSE
your pe

www.horseboxseller.com