

2018 Peugeot Boxer 3.5 Ton Select Excel Long stall new build coach built horsebox. Full wall. Built on LWB chassis.


HORSEBOXSELLER
your perfect horsebox

sales@horseboxseller.com
01327 368 474



- 2018 Peugeot boxer 3.5 ton chassis
- Built on Long wheel base chassis
- Brand new coach build
- Select Excel Model
- Long Stall model
- Full wall model

Price: £27,950
ref:24-856

Overview

- 2018 Peugeot boxer chassis
- New Build Select Excel
- Stalled for 2 rear facing. Full wall Model
- Finished off in Moon dust silver

Cabin / Chassis / Engine

- 2018 Peugeot boxer chassis
- Gross vehicle weight: 3500 kg
- Manual transmission
- Fuel: Diesel
- Three seats in the cab
- Multi-function steering wheel
- ABS braking system
- Twin electric windows
- Factory onboard computer
- Power steering
- Radio
- CCTV camera system
- Mileage: 117,378 Miles
- Date of first registration: 26/03/2018
- Euro 6b
- Engine size: 1997 cc
- Mot: 24th January 2025

Changing Area

- Seating area both sides
- Saddle rack
- Bridle rack
- LED lighting

Horse Area

- Stalled for two rear facing
- Full wall between horse area and changing area
- H style adjustable partition with rubber skirting with full anti bite guard
- Excellent height, width and length in horse compartment
- Steel flooring with buffalo boarding and thick anti-slip rubber matting
- Heavy duty EVA kick boarding
- Reinforced bulkhead
- Larger door between horse area and changing area
- Large windows with window bars
- Split side ramp with barn style doors
- Multiple tie rings
- Light and airy in the horse compartment

Exterior

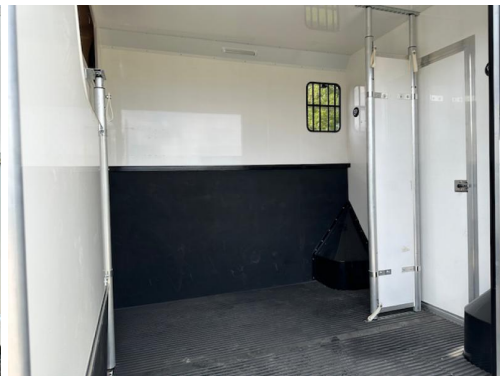
- Finished off in Moon dust silver
- External tie rings
- Chrome wheel trims
- Large rear door

Specification

- Unladen weight: 2400 Kg = Payload circa 1100 Kg

Summary

- Price £27950





Tel : 01327 368 474 or 01327 262 950
E-mail : sales@horseboxseller.com
Mobile : 07725 470 956



www.horseboxseller.com