

**Beautiful Scania 230 semi-automatic 18 Ton Coach built by JM Coach builders. Smart luxury living with large slide out. Sleeping for 6. Stalled for 5. Pristine condition throughout..**



**HORSEBOXSELLER**  
your perfect horsebox

sales@horseboxseller.com  
01327 368 474



- 2006 Scania 230 18,000 KG Chassis
- Coach built by JM Coach builders
- Stalled for 5
- Full luxury living, sleeping for 6
- Large bathroom
- Underfloor storage

**Deposit Taken**  
ref:24-855

## Overview

- 2006 Scania 230 18 Ton 4X2 Chassis
- Coach built by JM Coach builders
- Stalled for 5
- Smart luxurious living with slide out, sleeping for 6

## Cabin / Chassis / Engine

- 2006 Scania 230 4X2 Chassis
- Engine size: 8970 cc
- Gross vehicle weight: 18,000 kg
- Mileage: 268,138 Miles
- Transmission: Semi-automatic
- Two leather seats (Tan hide with JM logo in the head rest)
- Radio/CD
- Front and rear air suspension
- BHP: 220 BHP
- Fuel: Diesel
- Exhaust brake
- Digital tachograph
- Electric heated mirror
- Scania onboard computer
- Cruise control
- CCTV camera system
- Full tilt cab
- Kerb mirror
- Adjustable drivers seat with lumbar support
- Reading lights
- Adjustable steering wheel
- Mot: March 2025
- Air conditioning
- Sleeper cab

## Living Area

- Split charger with heavy duty leisure batteries
- Insulated ceiling
- Lined walls
- Raised flooring in living
- Padded ceiling with large sky light
- Manual slide out
- C shape leather seating with storage underneath, which converts into a double bed (Two matching leather stools)
- Large luton with fitted mattress with window either side
- Sleeping for two above Toilet/Shower with fitted mattress
- Fridge freezer
- Full cooker
- Microwave
- Belfast sink
- Fitted work top
- Water heater

- Blown heating
- TV with dvd player
- Dining table
- Multiple plug sockets with usb points
- Multiple cupboards with large hanging wardrobe
- LED lighting with mood floor lighting
- Multiple blinds and large curtains between cut through and living area
- Fitted vino flooring
- Large mirror

## **Bathroom**

- Fitted flush toilet
- Corner shower cubicle
- Handbasin
- Lighting
- Tinted window
- Upgraded water pump
- Large mirror
- Towel cupboards

## **Horse Area**

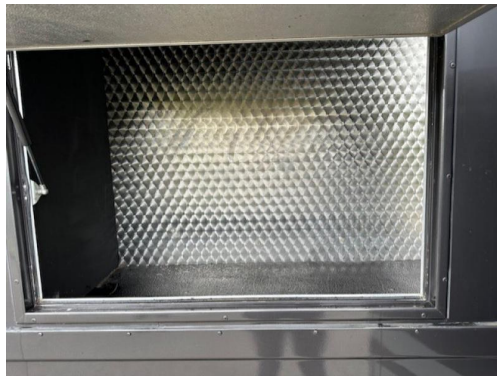
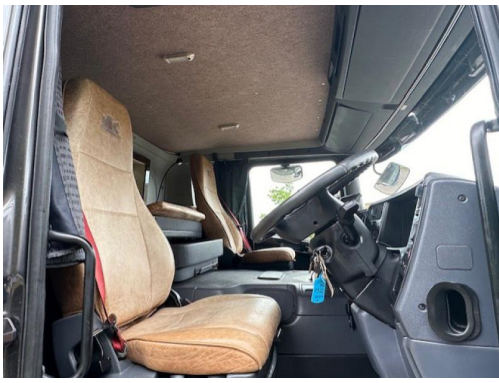
- Three Defra approved fans
- Stalled for 5
- 5 herringbone
- Full height and width in the horse compartment
- 4 adjustable padded partition with rubber skirting
- Aluminium flooring with cushioned anti-slip rubber matting
- EVA kick boarding
- Rug rack
- LED lighting
- Large tinted windows with window bars for protection
- Multiple tie rings and hay net rings
- GRP rear loading doors
- Air powered rear ramp with one piece anti-slip matting with inbuilt rubber tred grips
- Light and airy in the compartment, very well ventilated

## **Exterior**

- Metallic paintwork (Unmarked)
- Large underfloor storage with access from both sides
- Three large external tack lockers
- Tinted bonded windows
- Multiple skirt lockers
- Large water tank
- Inbuilt stainless tie rings
- External LED lighting
- Manual side awning
- Chrome wheel trims
- Built in steps into the living area
- 240 Volt connection point

## Summary

- Pristine condition throughout
- £104,995







**Tel : 01327 368 474 or 01327 262 950**  
**E-mail : [sales@horseboxseller.com](mailto:sales@horseboxseller.com)**  
**Mobile : 07725 470 956**



[www.horseboxseller.com](http://www.horseboxseller.com)