

2009 DAF LF 7.5 Ton Coach built by LM Coach works. Stalled for 2. Luxury living . Sleeping for 4. Large bathroom. Underfloor storage. Huge specification . Full tilt cab



sales@horseboxseller.com
01327 368 474



- 7.5 Ton DAF LF 7.5 Ton chassis
- Coach built by LM coachworks
- Stalled for 2 large horses herringbone or 3 ponies
- Underfloor storage
- Full luxurious living, sleeping for 4
- Full tilt cab

Price: £59,995
ref:24-853

Overview

- 2009 DAF LF 7.5 ton Chassis
- Coach built by LM coach builders
- Stalled for 2 large horses or 3 ponies
- Smart luxurious living with sleeping for 4

Cabin / Chassis / Engine

- DAF LF 170 7.5 Ton 4X2 Chassis
- Engine size: 4461 cc (Ad blue)
- Gross vehicle weight: 7,500 kg
- Mileage: 210,211 Kms = 130,619 Miles
- Transmission: Manual transmission
- Three seats in the cab (Cream diamond stitched leather with blue piping)
- Radio/CD
- Steel suspension
- BHP: 170 bhp
- Fuel: Diesel
- Mot: December 2024
- Exhaust brake
- Digital tachograph
- Electric heated mirror
- DAF onboard computer
- Cruise control
- CCTV camera system
- Full tilt cab
- Kerb mirror
- Adjustable drivers seat with lumbar support
- Reading lights
- Adjustable steering wheel

Living Area

- Insulated ceiling
- Lined walls
- Raised flooring in living
- White lined ceiling with manual skylight
- L shape leather cream diamond stitched leather seating with storage underneath, which converts into a double bed (Cream leather stool as well)
- Large luton with fitted mattress
- Fridge
- Full cooker
- Stainless steel sink
- Fitted work top
- Water heater
- Blown heating
- TV with dvd player
- Detachable table
- Multiple plug sockets
- Multiple cupboards with large hanging wardrobe

- LED lighting with mood floor lighting
- Multiple blinds
- Fitted vino flooring
- Large mirror
- Split charger with heavy duty leisure batteries

Bathroom

- Fitted corner shower tray
- Fitted corner sink with mirror above
- Upgraded water pump
- Lighting
- Tinted window
- Fitted flush toilet

Horse Area

- Stalled for 2 Horses or 3 ponies
- 2/3 herringbone
- Full height and width in the horse compartment with LED lighting throughout including night lighting
- Herringbone adjustable padded partition with rubber skirting
- Aluminium flooring with cushioned anti-slip rubber matting
- EVA kick boarding
- Aluminum white roof lining
- Large tinted bonded windows with window bars for protection
- Multiple tie rings and hay net rings
- GRP rear loading doors
- Well balanced ramp with one piece anti-slip matting with inbuilt rubber tread grips
- Light and airy in the compartment, very well ventilated

Exterior

- Finished off in metallic silver and blue paintwork (Immaculate condition)
- Large underfloor storage with access from both sides
- Two external tack lockers
- Multiple skirt lockers
- Water tank
- Stainless tie rings
- External LED lighting
- Chrome wheel trims
- Inbuilt steps into living area
- 240 Volt connection point
- Tinted bonded fitted windows

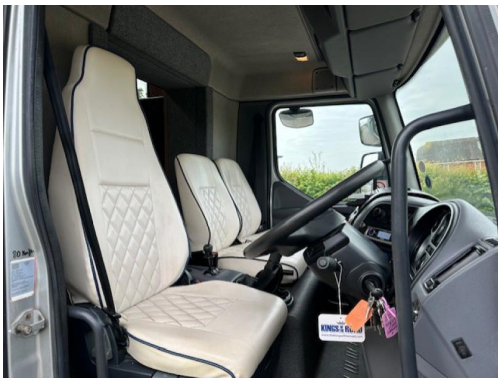
Dimensions

- Unladen weight: 5900 Kg = Payload circa 1600 Kg

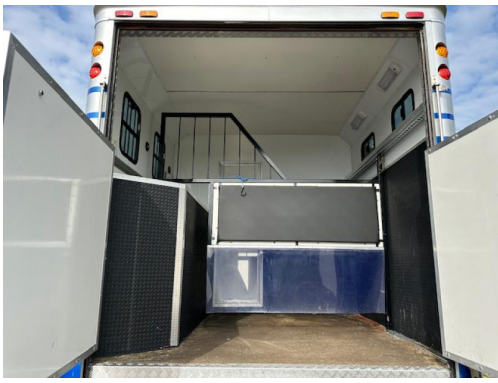
Summary

- Price £59,995

- Stunning 7.5 ton coach built horsebox.. Pristine condition throughout







Tel : 01327 368 474 or 01327 262 950
E-mail : sales@horseboxseller.com
Mobile : 07725 470 956



www.horseboxseller.com