

2007 DAF LF 7.5 Ton Coach built by WHS horseboxes. Stalled for 3. Smart living, Sleeping for 4. Toilet and shower. Underfloor storage with no external tack locker intruding into the horse area... Full tilt cab


HORSEBOXSELLER
your perfect horsebox

sales@horseboxseller.com
01327 368 474



- 2007 DAF LF 7,500 KG Chassis
- Coach built by WHS Horseboxes
- Stalled for 3 herringbone
- Underfloor storage
- Smart living, sleeping for 4
- Full tilt cab

Price: £29,995
ref:24-851

Overview

- DAF LF 7.5 Ton 4X2 Chassis
- Coach built by WHS Coach builders
- Full tilt cab
- Stalled for 3
- Smart living, with toilet and shower

Cabin / Chassis / Engine

- 2007 DAF LF 7.5 ton 4X2 chassis
- Date of first registration: 08/03/2007
- Mileage: 118,539 Miles
- Mot: Years MOT upon sale
- Three leather seats in the cab
- ABS braking system
- Fuel: Diesel
- BHP: 160 BHP
- Transmission: Manual
- Engine size: 3920 cc
- Rear steel suspension
- Power steering
- Adjustable driver seat
- Reading light
- CCTV camera system
- Cruise control
- Radio
- Euro 5
- On-board computer system
- Exhaust brake
- Full tilt cab

Living Area

- Blown heating
- Multiple plug sockets
- Hot water
- Cut through cab
- Insulated ceiling
- Lined walls
- L shape grey leather seating with storage underneath, bed converts into a double
- Sleeping for two above the cab in the luton
- Hob
- Sink
- Fitted work top
- Fridge
- Oven
- Multiple Cupboard and large wardrobe
- Lino flooring
- Lighting
- Tinted windows

- Detachable table

Bathroom

- Detachable shower head
- Lighting
- Fitted flush toilet
- Fitted shower tray

Horse Area

- Light and airy in the horse compartment, very well ventilated
- Defra approved fan
- Rug rack
- Stalled for 3 herringbone
- Excellent height, width and length in the horse area
- Two adjustable padded partitions
- Aluminum flooring with cushioned thick anti-slip rubber matting
- Heavy duty EVA kick boarding
- Large windows with window bar for protection
- Multiple tie rings and haynet rings
- GRP rear loading doors
- Well balanced rear ramp with anti-slip rubber matting on top
- Lighting throughout including loading light

Exterior

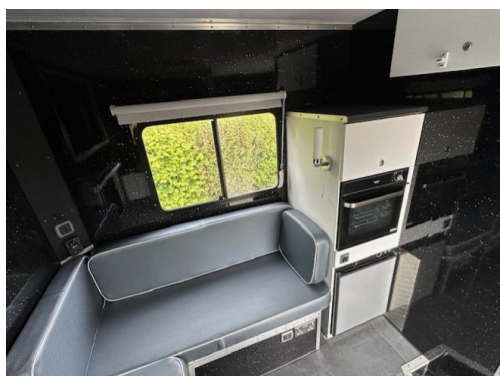
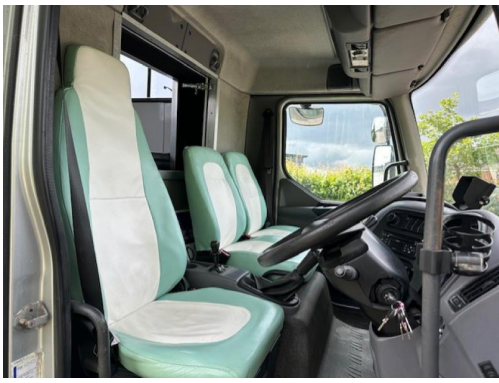
- Finished off in Metallic silver and grey paintwork
- Large external tack locker which does not intrude into the horse area
- Underfloor storage, access from both sides
- Water tank with horse wash
- Multiple skirt lockers
- 240 volt connection point
- Fold down steps into living area
- Chrome wheel trims

Specification

- Unladen weight 5,900 kg = Payload circa 1600 kg

Summary

- Price £29995
- Excellent condition throughout





Tel : 01327 368 474 or 01327 262 950

E-mail : sales@horseboxseller.com

Mobile : 07725 470 956



HORSEBOXSELLER

your perfect horsebox

www.horseboxseller.com