

STUNNING 7.5 Ton 2009 Iveco Eurocargo Automatic Coach built by Empire coach builders. Extreme Model. Stalled for 3. Smart luxurious living. Sleeping for 6. Huge specification throughout. No external tack lockers intruding into the horse area.



sales@horseboxseller.com
01327 368 474



- 2009 Iveco Eurocargo 75E16 Automatic chassis
- Coach built by Empire in 2016.. Extreme Model
- Stalled for 3
- Full luxurious living,
- Sleeping for 6
- No External tack locker intruding into the horse area

Price: £85,000
ref:24-838

Overview

- 7.5 Ton Iveco Eurocargo 75E16 Automatic Chassis
- Horsebox from new
- No external tack locker intruding into the horse area
- Smart luxurious living with sleeping for 6
- Extreme Model
- Full tilt cab

Cabin / Chassis / Engine

- 2009 Iveco Eurocargo 75E16 7.5 Ton Chassis
- Date of first registration: 19/06/2009
- Gross vehicle weight:7,500 kg
- Air conditioning
- Full automatic gearbox
- Engine: 3920 cc (160bhp)
- Mileage: 118,000 Miles
- Mot: June 2025
- Fuel: Diesel
- Ad Blue fuel system
- Grey leather seating with red piping with Empire logo inserted into headrest
- Adjustable driver seat with lumbar support
- Cruise control
- Multi-function steering wheel
- Radio//touch screen satellite navigation
- Camera system
- ABS braking system
- Exhaust brake
- Electric heated mirrors
- On-board computer
- Full tilt cab
- Euro 5

Living Area

- Insulated ceiling walls
- Satin finished walnut gloss wood walls
- Control panel
- Cut through cab
- C shape grey leather seating
- Large luton with fitted mattress and sky light in the ceiling
- Seating converts into a double
- Fitted granite work top with built in sink
- Combi microwave
- Fridge/freezer
- TV with DVD
- Gas Oven
- Heating
- Hot water
- Gloss finished cabinets

- Mood and LED lighting throughout
- Glass cabinets
- Adjustable dining table
- Large, tinted windows with fitted blinds
- Multiple large hanging wardrobes with chrome effect on the handles
- Heavy duty leisure batteries with split charging system
- Sleeping for two above the toilet and shoeer
- Multiple plug and USB sockets
- Large, fitted mirror

Bathroom

- Fitted corner shower with glass door
- Fitted flush toilet
- Fitted corner sink with mirror in front
- Heated towel rail
- Vanity cupboard below the sink
- Tinted window with fitted blind
- LED lighting including spot lighting

Horse Area

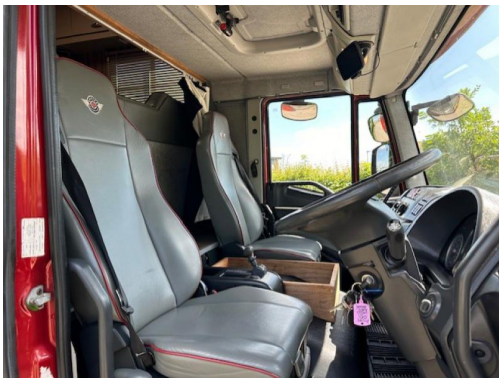
- Stalled for 3
- Full height and width in the horse compartment
- Aluminum padded adjustable partitions with rubber skirting
- Aluminum planked flooring with sealed cushioned rubber matting
- Defra approved fans fitted in the horse area
- Rug rack
- LED lighting including night travel lighting
- Heavy duty EVA kick boarding
- White aluminum ceiling (Two manual roof vents)
- Multiple adjustable polished tie and hay net rings
- Large, tinted windows with bars
- Aluminum planked gates
- Well balanced ramp with fitted one piece rubber matting with rubber tread
- Light and airy in the horse compartment, well ventilated and very inviting for the horses

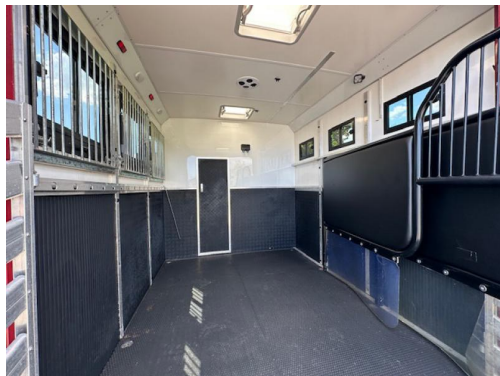
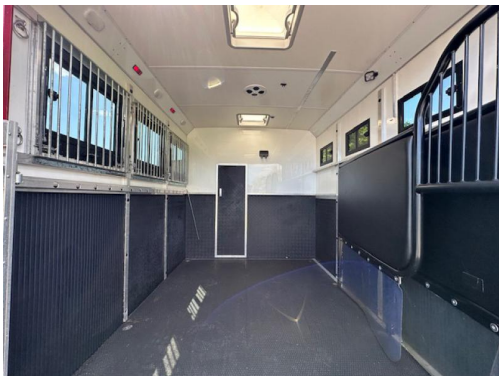
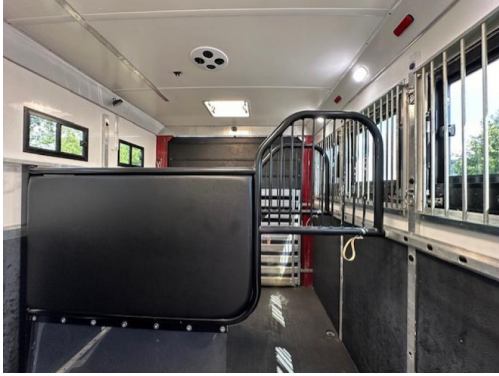
Exterior

- Metallic paintwork
- Underfloor storage with saddle and bridle racks
- Large water tank
- 240 volt connection point
- Bonded tinted fitted windows
- Multiple skirt lockers
- Chrome wheel trims
- Fold out steps into the living area

Summary

- Pristine condition throughout, LIKE NEW!
- Price £85,000







Tel : 01327 368 474 or 01327 262 950

E-mail : sales@horseboxseller.com

Mobile : 07725 470 956



HORSEBOXSELLER
your perfect horsebox

www.horseboxseller.com